

FEBRUARY 2021

Nantucket Land Bank

NEWSLETTER



INSIDE THIS ISSUE:

- 01** Land Bank Unveils New Trail at Beechwood Farm
- 02** The Perfect Place to “Chase” the Sunset
- 03** Coming Soon: Nantucket’s Coast to Coast Trail

Nantucket Land Bank
22 Broad St
Nantucket, MA 02554

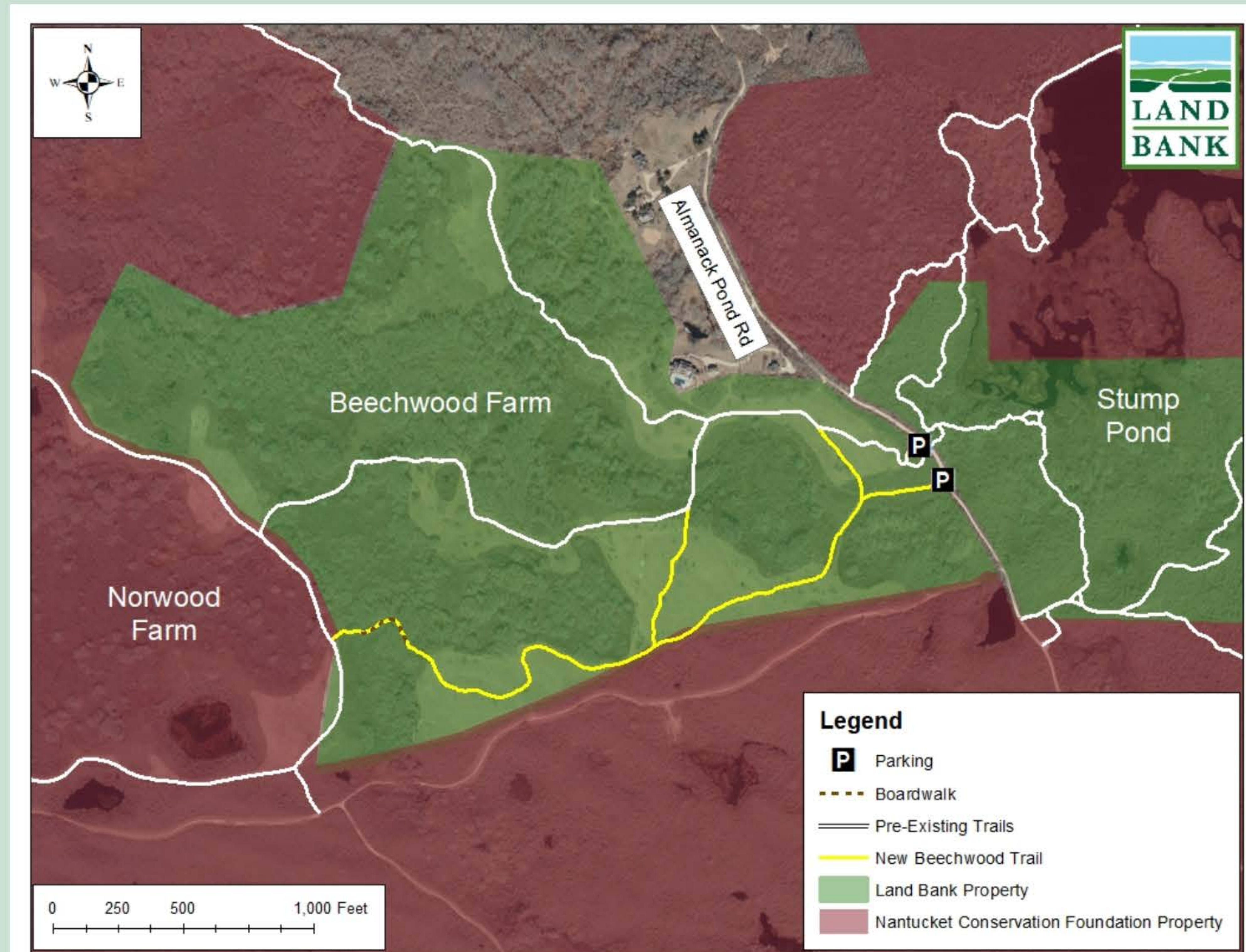
Phone: 508-228-7240
Website: nantucketlandbank.org
Instagram: @nantucketlandbank



Land Bank Unveils New Trail at Beechwood Farm

The Land Bank is proud to announce the completion of a brand new trail, made possible by recent additions to our Beechwood Farm property. The trail can be accessed via the parking lot at 35 Almanack Pond Road. It connects to our existing Beechwood Farm trail system, as well as the Nantucket Conservation Foundation's neighboring Norwood Farm.

The completion of this project provides an additional 0.75 miles of trail over rolling hills that offer fantastic views of tupelo forests, the Middle Moors, and Polpis Harbor. The western portion of the trail drops in elevation and takes you onto a boardwalk and through a lush, forested wetland. Our wetland ecosystems are incredibly beautiful, ecologically significant, and sensitive to disturbance. Our boardwalk makes this gorgeous wetland accessible to the public, while also protecting this fragile ecosystem.



This is a part of the island that is particularly important to Land Bank Commissioner, Allen Reinhard. In creating this new trail, the Land Bank wanted to take the opportunity to recognize Allen for his 17 years of service as a Commissioner. Allen has spent years extensively walking the island's trail network which has helped identify valuable acquisitions and connections that should be made between conservation properties. He has also worked hard advocating to acquire some of Nantucket's most beautiful scenic vistas and landscapes for public enjoyment and use. We have chosen to honor Allen's public service on the Land Bank Commission with two plaques at either end of the boardwalk that traverses through the wetland portion of the trail. Thank you, Allen, for everything you have given to the Land Bank and the island.

The Perfect Place to “Chase” the Sunset!

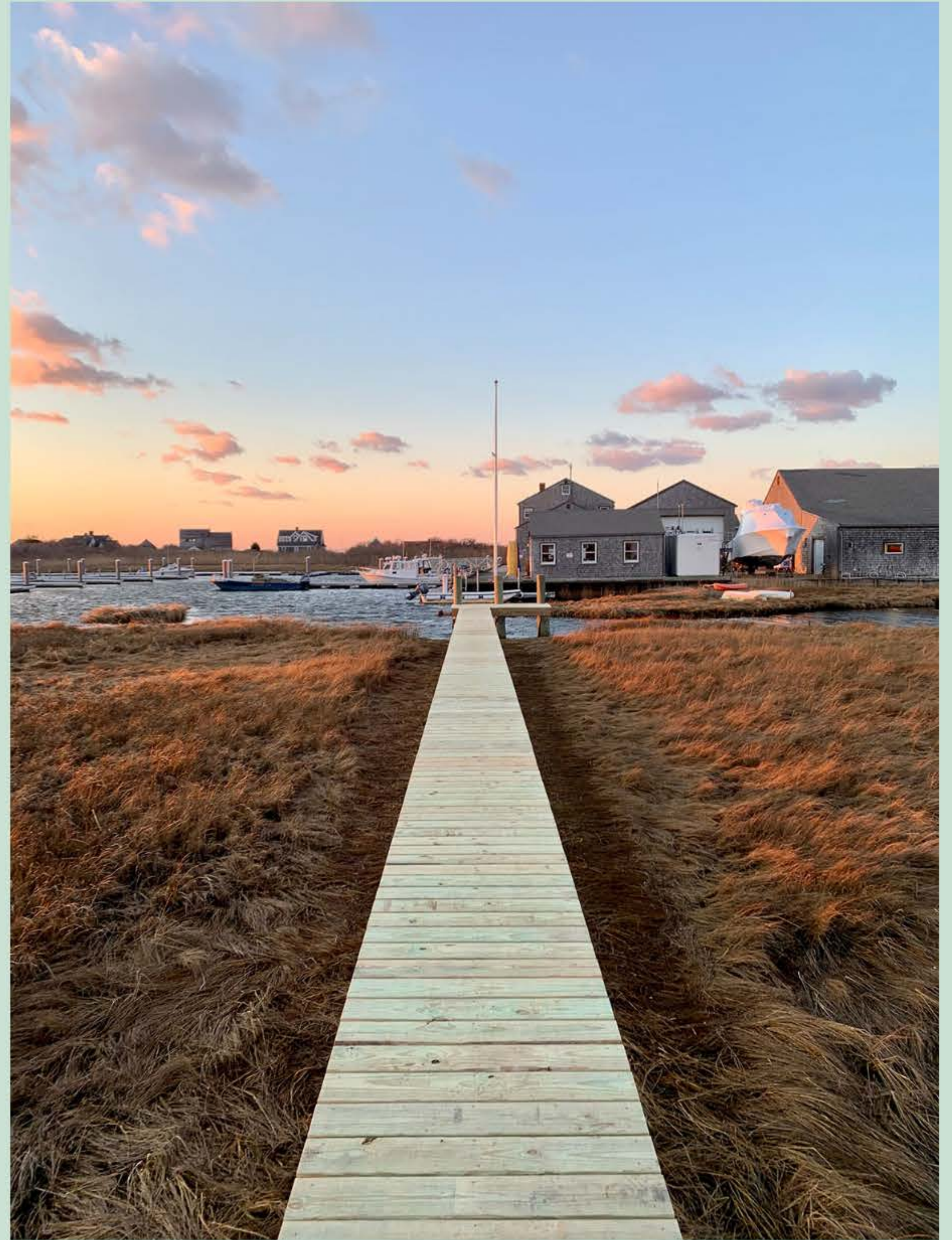


Old Chase dock, December 2019

This past January, our field crew was hard at work rebuilding a boardwalk and dock down at the Land Bank’s Chase property, located at 48 & 50 Tennessee Ave in Madaket.

When the Land Bank acquired this property in 2008, it contained a house and a boathouse, as well a boardwalk extending into the salt marsh at Hither Creek. The house was subsequently removed from the property and donated to Habitat for Humanity for relocation and use as affordable, year-round housing. The house now sits on Surfside Road.

It is estimated that the previously existing boardwalk on the Chase property had been constructed in the early 1980s. As a result, nearly 40 years later, the dock was experiencing several maintenance issues. The boardwalk was very narrow and low to the ground, making it difficult to navigate particularly when it was regularly flooded during high tides. Additionally, it was being damaged by ice and frost heave.



New dock, January 2021

The new Chase dock vastly improves upon these issues. The boardwalk is taller, which allows for more sunlight to access the marsh ecosystem around and below the dock, and also makes it more resilient to changing tides. The dock is also much wider, which promotes ease of access to a broader audience venturing out over the water.

This was a fantastic project for our field crew to work on. They enjoyed ending each day of hard work with a glorious sunset – and now, you can too!





COMING SOON:

Nantucket's Coast to Coast Trail

In October 2019, the Nantucket Land Bank held its first Cross Island Hike event. The day-long, nearly 20 mile hike was a great success, as nearly 200 people convened at Hoick's Hollow Road for the beginning of the event, and about 65 people walked the route in its entirety.

After seeing the enthusiasm for this event, the Land Bank began working on a collaborative project to establish a permanent trail that traverses the island, which will be known as the Coast to Coast Trail. Working closely with our partners, Massachusetts Audubon Society and the Nantucket Conservation Foundation (NCF), we have created a tentative route for the trail, beginning in Sconset and ending in Madaket.



Beginning of the 2019 Cross Island Hike. Photo curtesy of Tom Griswold.



The trail will be thoroughly marked with permanent signage so that islanders may walk the trail year round. We also anticipate providing paper map copies, as well as uploading the map to NCF's ACKTrails app so that the course may be followed using a phone's GPS signal.

Currently, the route is just over 24 miles, and the vast majority is on conservation land held by the Land Bank, Mass Audubon, and NCF.

The Coast to Coast trail is a true testament to the value this community places on preserving our open spaces. This incredible achievement would not have been possible without the commitment and foresight of our conservation partners on Nantucket over the years.

Please stay tuned for further updates on this exciting project! We are hoping that the trail will be ready for public use this coming summer.